

Supplier name: CPMG Architects

Publication date: December 2025

Commitment to achieving Net Zero

CPMG Architects is committed to achieving Net Zero emissions by 2040.

Baseline Emissions Footprint

Baseline emissions are a record of the greenhouse gases that have been produced in the past and were produced prior to the introduction of any strategies to reduce emissions. Baseline emissions are the reference point against which emissions reduction can be measured.

Baseline Year: 2019-20		
Additional Details relating to the Baseline Emissions calculations		
<i>We have been collating information for carbon footprint assessments since 2015. In 2019-20, with support from Nottingham Trent University's sustainable research team, we expanded our Scope 3 emissions reporting. We have therefore adopted 2019-20 as our Baseline Year, offering a full set of Scope 1, 2 and 3 emissions in detail.</i>		
Baseline Year Emissions:		
Scope 1	36.98 tCO ₂ e	<i>Including:</i> <ul style="list-style-type: none">- Gas consumption (Nottingham & London studios)- Air-conditioning coolant replenishment (Nottingham studio)- Business Travel: Company vehicles
Scope 2	22.35 tCO ₂ e	<i>Including:</i> <ul style="list-style-type: none">- Electricity consumption (Nottingham & London studios)
Scope 3	51.27 tCO ₂ e	<i>Including:</i> <ul style="list-style-type: none">- Gas WTT distribution losses (Nottingham & London studios)- Electricity T&D distribution losses (Nottingham & London studios)- Water Supply & Treatment (Nottingham & London studios)- Business Travel: Private Car- Business Travel: Air- Business Travel: Rail- Business Travel: Taxi- Business Travel: Bus- Hotel Stays- General Waste (Nottingham studio)- Recycled Waste (Nottingham studio)- Paper Purchase- Working from Home- Staff Commuting (Nottingham & London studios)- Off-site Data Storage
TOTAL EMISSIONS	110.60 tCO ₂ e	



Current Emissions Reporting

Current Emissions Reporting Year: 2024-25		
Additional Details relating to the Current Emissions calculations		
Our reporting year for carbon emissions follow our financial year, starting 01 May. Our latest year for which full data is available is May 2024 to April 2025, and these details are reported below. An assessment for 2025-26 will be assessed at the end of the financial year, and results published by the end of 2026		
Current Year Emissions:		
Scope 1	0.00 tCO ₂ e	Including: <ul style="list-style-type: none"> - Gas consumption (Nottingham, London & Birmingham* studios) - Air-conditioning coolant replenishment (Nottingham studio) - Business Travel: Company vehicles (All studios)
Scope 2	13.28 tCO ₂ e	Including: <ul style="list-style-type: none"> - Electricity consumption (Nottingham, London & Birmingham* studios)
Scope 3	53.56 tCO ₂ e	Including: <ul style="list-style-type: none"> - Gas WTT distribution losses (Nottingham, London & Birmingham* Studios) - Electricity T&D distribution losses (Nottingham, London & Birmingham* studios) - Water Supply & Treatment (Nottingham, London & Birmingham* studios) - Business Travel: Private Car (All studios) - Business Travel: Air (All studios) - Business Travel: Taxi (All studios) - Business Travel: Rail (All studios)* - Business Travel: Bus (All studios)* - Hotel Stays (All studios) - Waste: General (Nottingham studio) - Waste: Recyclable (Nottingham studio) - Waste: WEEE Electronic Recycled Waste (All studios)* - Waste: Compostable (London studio)* - Material Use: Paper Purchase (All studios) - Material Use: ICT Electronics Purchase (All studios)* - Material Use: Toner/Cartridge Purchase (Nottingham studio)* - Working from Home (All studios) - Staff Commuting (Nottingham, London & Birmingham* studios) - Off-site Data Storage & Servers (All studios) <p><i>* Additional emissions added to carbon footprint measurement since Baseline Year reporting</i></p>
TOTAL EMISSIONS	66.84 tCO ₂ e	39.6% REDUCTION FROM BASELINE YEAR ACROSS SCOPES 1, 2 & 3 77.6% REDUCTION FROM BASELINE YEAR ACROSS SCOPES 1 & 2



Emissions Reduction Targets

In order to continue our progress to achieving Net Zero, we have adopted the following carbon reduction targets:

- A reduction to 50% of the Baseline Year by **2030: target 55.30 tCO₂e**
- A reduction to 90% of the Baseline Year by **2040: target 11.06 tCO₂e**

Progress against these targets can be seen in the graph below:

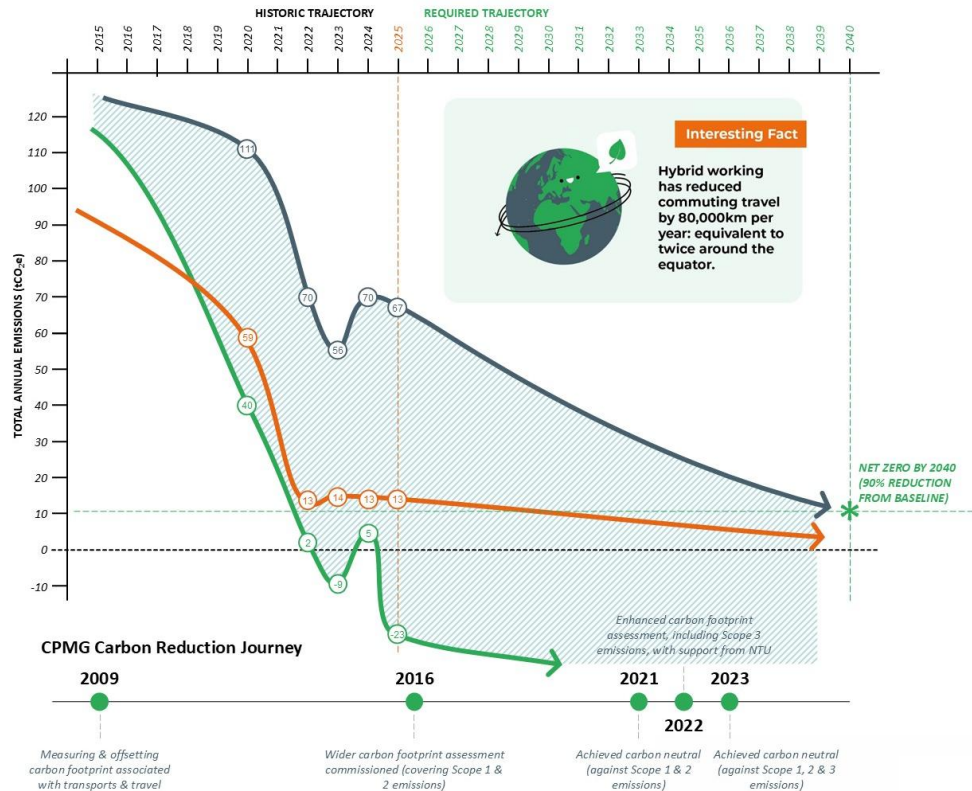
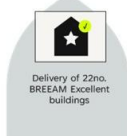


Our Carbon Reduction

- TOTAL GROSS EMISSIONS (SCOPE 1, 2 & 3)
- GROSS EMISSIONS (SCOPE 1 & 2)
- NET EMISSIONS AFTER OFFSETTING (AGAINST SCOPE 1, 2 & 3)
- OFFSETTING VIA CARBON FOOTPRINT, FOREST CARBON, CLIMACARE, TRUNDL, AND REGO-CERTIFIED ELECTRICITY

Future Reductions

- Net zero carbon target by 2040
- EVs for business travel by car
- EVs for commuting by car
- Increased travel by train
- Investment in renewables



Obstacles to Reducing Emissions

Whilst we are achieving a 39.6% reduction in Scope 1, 2 & 3 emissions from our baseline year, the rate of reduction has slowed, and both 2023-24 and 2024-25 emissions embody an increase from 2022-23. This is due to a number of factors:

- Considerable growth in size of business since our baseline year (76% increase in turnover in 2024-25)
- Investment in new ICT equipment for technical staff
- Increased international projects leading to increasing air travel
- UK grid de-carbonisation reversed in 2023-24, and 2024-25, with higher emissions factors

Carbon Reduction Projects

Completed Carbon Reduction Initiatives

The following environmental management measures and projects have been completed or implemented since the 2019-20 baseline:

- Re-certification to ISO 14001 Environmental Management System
- Signatory to SME Climate Hub
- Signatory to RIBA Climate Challenge 2030
- Relocation of Nottingham studios and fit-out to offer more efficient premises
- Transition of all three practice studios to REGO-certified renewable electricity supply contracts
- Adoption of Cycle-to-Work scheme for employees
- Adoption of Octopus Energy EV salary sacrifice scheme for employees
- Transition of third party data provider contract to supplier with fully REGO-certified renewable electricity supply contract



Even with a significant increase in the size of the business, the annual carbon emission reductions achieved by these schemes equate to **43.8 tCO₂e**, a **39.6%** reduction against the 2019-20 baseline emissions.

Future Carbon Reduction Initiatives by 2030

In the future we aim to implement further measures such as:

- Electrification of business travel by car (c. **8.6 tCO₂e** reduction)
- Electrification of employee commuting by car (c. **8.6 tCO₂e** reduction)
- Travel to MIPIM by rail (c. **0.8 tCO₂e** reduction)
- Increase UK business travel by rail (c. **0.7 tCO₂e** reduction)
- Reduced homeworking (c. **1.6 tCO₂e** reduction if 50% reduction)
- Potential PV installation at SPG & London (c. **1.7 tCO₂e** reduction)
- Grid De-Carbonisation (c. **4.6 tCO₂e** reduction by 2030)
- Attract Employees back to Office (c. **3.8 tCO₂e** reduction)

The potential carbon emission reductions from these initiatives have been calculated at **28.8 tCO₂e**, representing a further **26.0%** reduction against the 2019-20 baseline emissions.

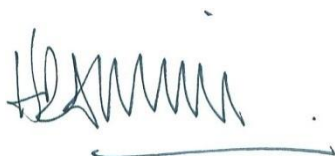
Commitment

This Carbon Reduction Plan has been completed in accordance with PPN 06/21 and associated guidance and reporting standards for Carbon Reduction Plans. Emissions have been reported and recorded in accordance with the published reporting standard for Carbon Reduction Plans and the GHG Reporting Protocol corporate standard, and use the appropriate Government emission conversion factors for greenhouse gas company reporting.

Scope 1 and Scope 2 emissions have been reported in accordance with SECR requirements, and the required subset of Scope 3 emissions have been reported in accordance with the published reporting standard for Carbon Reduction Plans and the Corporate Value Chain (Scope 3) Standard.

This Carbon Reduction Plan has been reviewed and signed off by the Board of Directors.

Signed on behalf of CPMG Architects:



Hugh Avison
Director
December 2025

